

Take Action Today



Sign Up for Alerts

AlertMarin

AlertMarin sends critical information from local agencies during a disaster if **you need to take**

action. Register up to five phones in your household.

Alerts may include:

- Wildfire and evacuation information
- Information during an event about evacuation routes, shelters, and transportation

Sign up at AlertMarin.org.

No Internet access? Call 415 473-6584 to register.

Nixle

Nixle sends general public safety alerts about local issues via text based on your zip code. You can sign up for alerts from multiple zip codes. Alerts may include:

- Road closures, police activity, missing persons
- Post-disaster information about shelters

Text your zip code to 888-777 to sign up.



Pack A Go Bag

Put together a supply kit and keep it accessible.

Each person and pet should have their own bag.

- Wallet, personal ID, bank cards, cash in small bills
- Water & snacks
- 5-7 day supply of medication
- Flashlight or headlamps
- N95 masks
- Cell phone charger / battery bank
- Small First Aid kit
- Warm clothes (extra underwear & socks)
- Personal hygiene & sanitation supplies
- Eyeglasses & other medical aids
- Computer & portable media backups



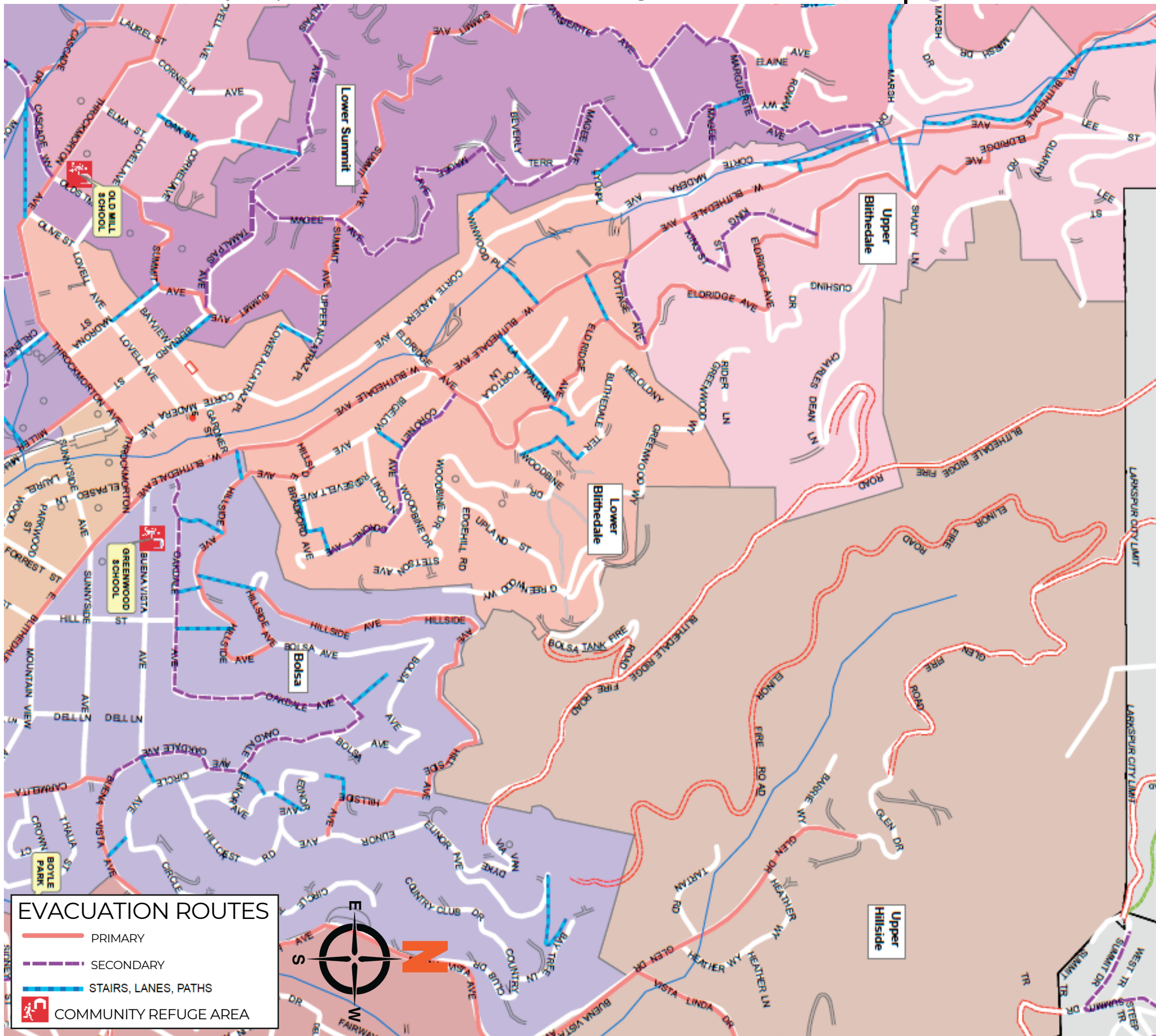
Know **TWO** ways out of your home and neighborhood.

Take only **ONE** car, if you can.

Scan the QR code with your phone's camera or visit www.smfd.org/evacuation for more.

NEIGHBORHOODS

- UPPER BLITHEDALE
- LOWER BLITHEDALE
- UPPER HILLSIDE
- BOLSA



Types of Alerts & Warnings

Shelter in Place

Stay in your current location or the safest nearby building. This may be required when evacuation is unnecessary or too dangerous.

Evacuation Warning

Be ready to leave. Prepare your family. Gather your go bag. Leave if you feel unsafe.

Evacuation Order

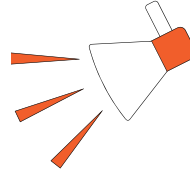
Leave NOW! Evacuate immediately. Follow instructions from Emergency Services and First Responders

Red Flag Warning

These warnings are issued when weather conditions are right for extreme wildfire events. This is the time to stay on high alert and be ready to evacuate quickly

When to call 911

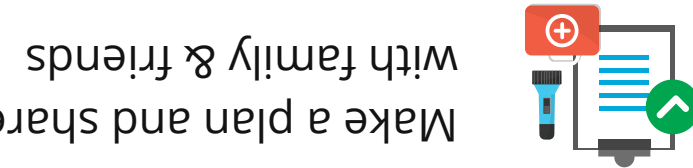
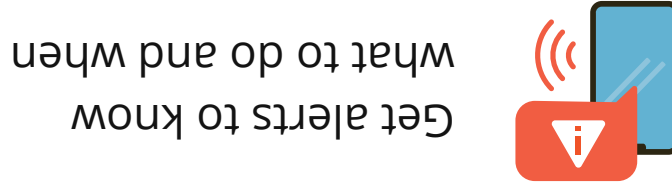
- Any type of fire
- A vehicle collision, especially if someone is injured
- When you or the person you care for feels at risk
- Any crime in progress
- Any situation when medical help is needed right away



READY marin

Mill Valley: Upper / Lower Blithedale, Upper Hillside, Bolsa
www.smfd.org/evacuation

5 SIMPLE STEPS TO GET READY



Help friends and neighbors get ready

For more information on how to get ready go to www.readymarin.org



SOUTHERN MARIN FIRE PROTECTION DISTRICT
28 Liberty Ship Way Ste. 2800 | Sausalito, CA 94965
www.smfd.org

