



# WILDFIRE RISK HOME EVALUATION PROGRAM

## Defensible Space & Home Hardening

### Coming soon to your neighborhood: Wildfire Risk Home Evaluations

Hello Neighbors,

The Marin Wildfire and your local fire department is committed to working with you to reduce the risk of wildfire through home hardening and defensible space evaluations on your property.

**Starting as early as August 20th, properties in the Sorich Ranch (San Francisco Blvd) will be evaluated for wildfire risk by your local fire department.** If you are not at home, we will only inspect what we can see from the street to your front door.

Your Wildfire Risk Report will be available for review approximately 24 hours after the inspection. It provides steps to reduce wildfire risks and improve your safety. Please open your report, review the findings and access resources. Some actions may be required by law. Property owners are required to maintain their properties' vegetation at all times during fire season and should not wait for an inspection to begin work.

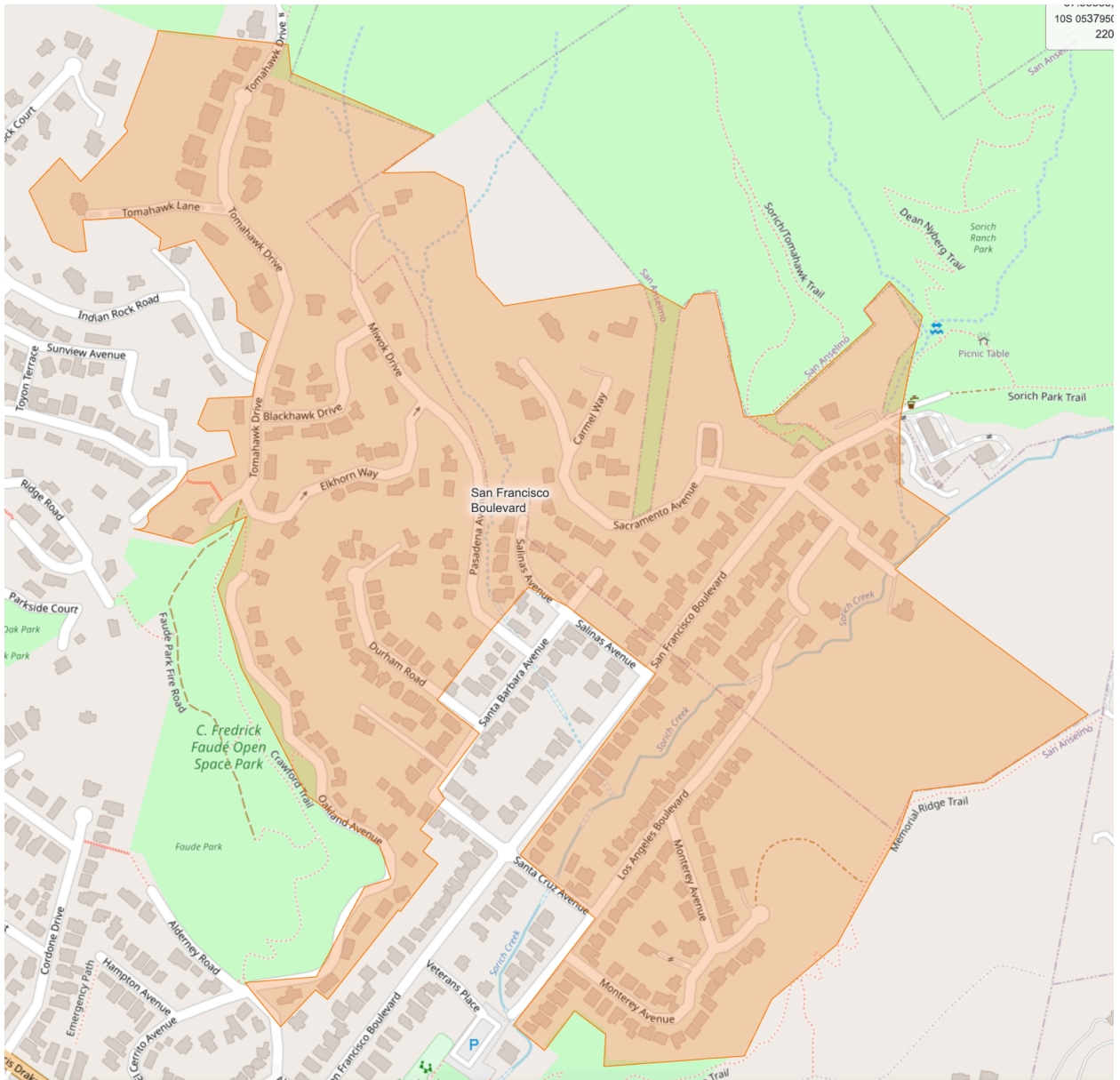
Review your report online or request a copy to be mailed to you. Go to [marinwildfirespace.org](http://marinwildfirespace.org) or call (415) 275 – 1185 for help and resources. Wildfire Risk Reports are available online to property owners, renters, and authorized representatives.

This program is provided by your local fire department and Marin Wildfire Prevention Authority, funded by Tax Measure C (2020)



**Marin Wildfire Prevention Authority** Defensible Space and Home Hardening Evaluation Program

<https://www.marinwildfire.org/dspace> | [dspace@marinwildfire.org](mailto:dspace@marinwildfire.org) | (415) 275-1185



Properties within the highlighted area above will receive inspections in 2024